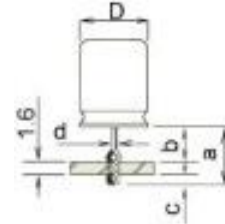
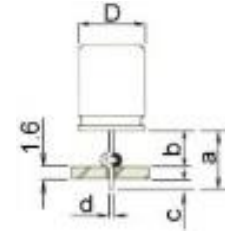


TP/R-PR Taped Radial Component Cut & Form Machine:

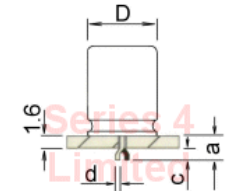
	MM			INCH		
	Min	Max	Fixed	Min	Max	Fixed
OL93.0001 – SMS/1 Stand Off – Lock In:						
a	6.0	13.0	-	0.236	0.511	-
b	3.0	10.0	-	0.118	0.393	-
c	-	-	1.4	-	-	0.055
d	0.4	0.8	-	0.015	0.031	-
D	1.0	10.0	-	0.039	0.393	-



OL93.0002 – SMS/2 Stand Off:						
a	6.0	13.0	-	0.236	0.511	-
b	3.0	10.0	-	0.118	0.393	-
c	-	-	1.4	-	-	0.055
d	0.4	0.8	-	0.015	0.031	-
D	1.0	10.0	-	0.039	0.393	-

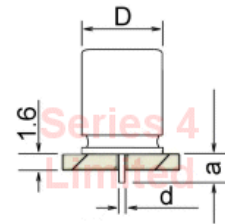


OL93.0003 – SMS/3 Body Locked on PCB Board:						
a	-	-	3.0	-	-	0.118
c	-	-	1.4	-	-	0.055
d*	0.4	0.8	-	0.015	0.031	-
D	1.0	10.0	-	0.039	0.393	-

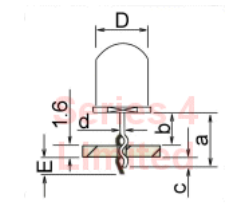


*To be specified on order

OL93.0004 – SMS/4 Straight Cut:						
a	3.0	10.0	-	0.118	0.393	-
d	0.4	0.8	-	0.015	0.031	-
D	1.0	10.0	-	0.039	0.393	-

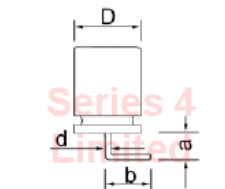


OL93.0005 – SMS/5 Polarity:						
a	6.0	13.0	-	0.236	0.511	-
b	3.0	10.0	-	0.118	0.393	-
c	-	-	1.4	-	-	0.055
d*	0.4	0.8	-	0.015	0.031	-
D	1.0	10.0	-	0.039	0.393	-
E*	-	-	2.2	-	-	0.086



*To be specified on order

OL93.0006 – SMS/6 90° Bending:						
a	3.0	8.0	-	0.118	0.314	-
b	-	-	6.0	-	-	0.236
d*	0.4	0.8	-	0.015	0.031	-
D*	1.0	6.0	-	0.039	0.236	-

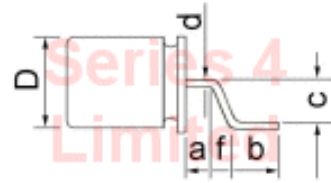


TP/R-PR Taped Radial Component Cut & Form Machine:

***To be Specified on order**

OL93.0007 – SMS/7 Surface Mounting:

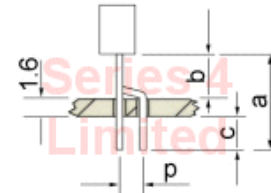
a	2.5	8.0	-	0.098	0.314	-
b*	-	-	2.0	-	-	0.078
c*	-	-	2.5	-	-	0.098
d*	0.4	0.8	-	0.015	0.031	-
D*	1.0	10.0	-	0.039	0.393	-
f*	-	-	1.0	-	-	0.039



***To be specified on order**

OL93.0008 – SMS/8 TO92 Center Lead Spread P=1.27mm and Cut:

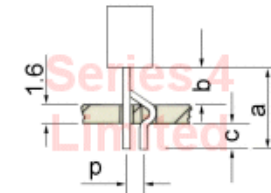
a	6.0	9.0	-	0.236	0.354	-
b	3.0	6.0	-	0.118	0.236	-
c	-	-	1.4	-	-	0.055
p*	-	-	1.27	-	-	0.05



***To be specified on order**

OL93.0010 – SMS/10 TO92 Center Lead Spread and Lock:

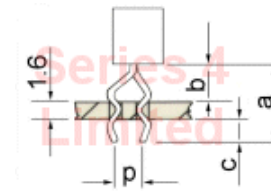
a	6.0	9.0	-	0.236	0.354	-
b	3.0	6.0	-	0.118	0.236	-
c	-	-	1.4	-	-	0.055
p*	-	-	1.27	-	-	0.05



***To be specified on order**

OL93.0011 – SMS/11 TO92 Center Lead Spread 3 Lead Lock:

a	6.0	9.0	-	0.236	0.354	-
b	3.0	6.0	-	0.118	0.236	-
c	-	-	1.4	-	-	0.055
p*	-	-	1.27	-	-	0.05



***To be specified on order**